

Location: _____



T1800-PB-13 with Galvanized Steel Integral Rail

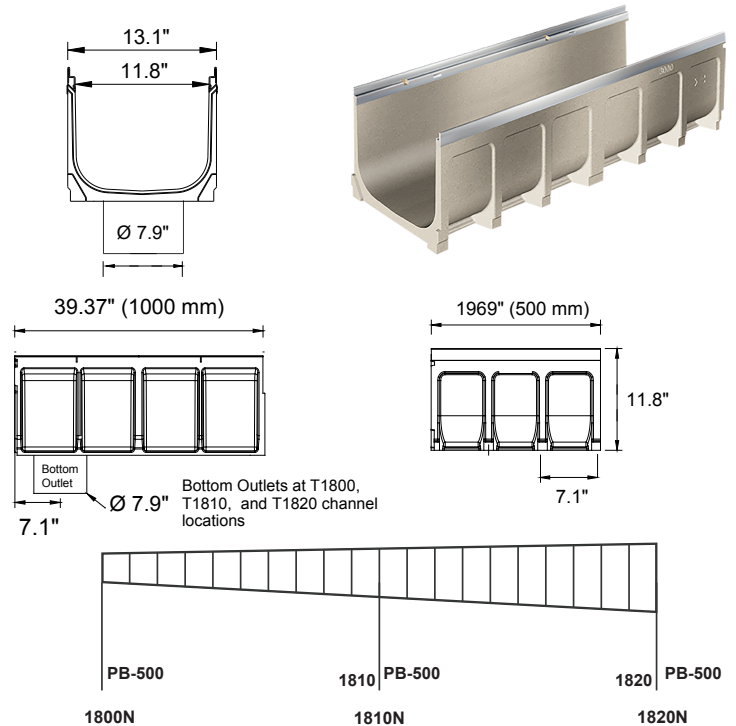


Specification:

MIFAB®'s T1800-PB-13 series channels shall be 39.4" (1000 mm) long with a 12" (300 mm) internal width. Interconnecting channels sections are made from high strength Polymer Concrete and available in sloping and non-sloping (neutral) channels. Each channel comes with a standard galvanized steel edge rail which is mechanically embedded in the channel.

Installation devices, plastic end cap/outlet cap, and catch basins are available accessories. System comes complete with 4" preformed bottom outlets at neutral locations. Grates (separate Specification Sheets) are available in in Load Class A-E in a variety of materials. Grates utilize the patented "Clipfix" locking mechanism.

CHANNEL MODEL #	BODY TYPE Sloped - .5% Neutral - 0%	INVERT BODY DEPTH		OVERALL BODY DEPTH		MAXIMUM FLOW RATE GPM	WEIGHT (LESS GRATE) Lbs.
		E1 (Min.)	E2 (Max.)	E1 (Min.)	E2 (Max.)		
T1800N-PB-13	Neutral	10.4"	10.04"	11.82"	11.82"	633	76.28
T1800N-PB-13-BO8	Neutral	10.4"	10.04"	11.82"	11.82"	633	76.28
T1800N-PB-13-500	Neutral	10.4"	10.04"	11.82"	11.82"	633	38.14
T1801-PB-13	Sloped	10.4"	10.24"	11.82"	12.01"	688	82.19
T1802-PB-13	Sloped	10.24"	10.44"	12.01"	12.21"	721	82.73
T1803-PB-13	Sloped	10.44"	10.63"	12.21"	12.41"	756	83.26
T1804-PB-13	Sloped	10.63"	10.83"	12.41"	12.60"	793	83.80
T1805-PB-13	Sloped	10.83"	11.03"	12.60"	12.80"	829	84.34
T1806-PB-13	Sloped	11.03"	11.23"	12.80"	13.00"	867	84.88
T1807-PB-13	Sloped	11.23"	11.42"	13.00"	13.19"	905	85.42
T1808-PB-13	Sloped	11.42"	11.62"	13.19"	13.39"	945	85.95
T1809-PB-13	Sloped	11.62"	11.82"	13.39"	13.59"	986	86.49
T1810-PB-13	Sloped	11.82"	12.01"	13.59"	13.78"	1048	87.03
T1810-PB-13-BO8	Sloped	11.82"	12.01"	13.59"	13.78"	1048	87.03
T1810N-PB-13	Neutral	12.01"	12.01"	13.78"	13.78"	1048	85.16
T1810N-PB-13-BO8	Neutral	12.01"	12.01"	13.78"	13.78"	1048	85.16
T1810N-PB-13-500	Neutral	12.01"	12.01"	13.78"	13.78"	1048	49.23
T1811-PB-13	Sloped	12.01"	12.21"	13.78"	13.98"	1091	90.63
T1812-PB-13	Sloped	12.21"	12.41"	13.98"	14.18"	1135	91.17
T1813-PB-13	Sloped	12.41"	12.60"	14.18"	14.38"	1179	91.71
T1814-PB-13	Sloped	12.60"	12.80"	14.38"	14.57"	1225	92.25
T1815-PB-13	Sloped	12.80"	13.00"	14.57"	14.77"	1273	92.78
T1816-PB-13	Sloped	13.00"	13.19"	14.77"	14.97"	1320	93.32
T1817-PB-13	Sloped	13.19"	13.39"	14.97"	15.16"	1371	93.86
T1818-PB-13	Sloped	13.39"	13.59"	15.16"	15.36"	1422	94.40
T1819-PB-13	Sloped	13.59"	13.78"	15.36"	15.56"	1472	94.94
T1820-PB-13	Sloped	13.78"	13.98"	15.56"	15.75"	1566	95.47
T1820-PB-13-BO8	Sloped	13.78"	13.98"	15.56"	15.75"	1566	95.47
T1820N-PB-13	Neutral	13.98"	13.98"	15.75"	15.75"	1566	91.60
T1820N-PB-13-BO8	Neutral	13.98"	13.98"	15.75"	15.75"	1566	91.60
T1820N-PB-13-500	Neutral	13.98"	13.98"	15.75"	15.75"	1566	52.78



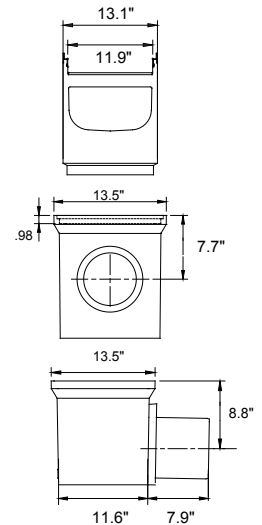
**T1800-CB1220-13 Galvanized Edge Catch
Basin Sediment bucket included**



**CATCH BASIN
TOP ASSEMBLY**

**CATCH BASIN
OPTIONAL
EXTENSION**

8\"/>



CLIPFIX ADVANTAGE

The MEA polymer concrete channels have been designed for our universal CLIPFIX grate locking mechanism. The system (channel and grate) provides longitudinal shift protection.

Job Name: _____

Page No: _____

Section No: _____

Contractor: _____

Schedule No: _____

Purchase Order No: _____

Revision Date: 02/18/2022

CALIFORNIA PROPOSITION 65 WARNING. This product contains chemicals known to the State of California to cause cancer and birth defects or other reproductive harm.

MIFAB reserves the right to make changes in material and design without formal notice and obligation.

USA: 1-800-465-2736 www.mifab.com CAN: 1-800-387-3880